

WOODEN BOAT RACING ASSOCIATION

A Chartered Association of the Yacht Racing Association of San Francisco Bay

2006 RACING SEASON

NOTICE OF RACE

Organizing Authority: The YRA of San Francisco Bay

1.0 RULES

- 1.1 Races will be governed by the *rules* as defined in *The Racing Rules of Sailing*. **The Sailing Instructions replace the YRA Standing Sailing Instructions and WBRA Special Instructions.**
- 1.2 RRS 40.1 is changed as follows: All competitors are required to wear life jacket or other adequate personal flotation device while racing.

2.0 ELIGIBILITY AND ENTRY

- 2.1 Members in good standing of the following classes are invited to participate: IOD, KNARR, BIRD, and FOLKBOAT.
- 2.2 Eligible boats may request that entry forms be sent from the YRA office. They are also available on the YRA web site, and in the **Latitude 38 Master Racing schedule for San Francisco.**
- 2.3 In order to avoid a late fee, entry forms and fee must be **received at the YRA office by 5 PM, Monday, April 24, 2005** to enter the full season; and thereafter by 5 PM the Monday preceding any race, to enter the remainder of the season.
- 2.4 If an entry form and fee is received after 5 PM on the Monday preceding the full season, or after 5 PM on the Monday preceding any race for the purpose of entering the remainder of the season, such entry form and fee must be received by 5 PM the following Wednesday and include an additional late fee of \$35.
- 2.5 The normal WBRA entry fee is \$220, which includes YRA membership and US Sailing membership. An entrant who has previously paid YRA membership dues for the current year is eligible for a \$40 adjustment. An entrant who has already paid US Sailing dues through December of the current year is eligible for a \$40 adjustment.

3.0 MANAGEMENT

- 3.1 Each race shall be under the management of a race committee of the sponsoring yacht club.
- 3.2 Sponsoring Yacht Clubs, Class Officers, and WBRA Officers, are listed in Appendix A.

4.0 SCHEDULE AND RACING AREAS

- 4.1 Dates, first warning signal, and venues are as follows:

4/29	1055	City Front
5/20	1055	Berkeley Olympic Circle
6/04	1055	City Front
6/25	1225	South Bay
8/06	1225	Southampton Shoal
8/12	1055	Knox
8/26	1055	Knox
9/09	1055	City Front

5.0 MINIMUM EQUIPMENT LIST

- 5.1 Boats must comply with the United States Coast Guard's requirements for recreational vessels, and minimum additional equipment as follows: (1) USCG approved life jackets for each member of the crew; (2) one horseshoe life ring or USCG approved ring buoy; (3) a USCG approved (or equivalent) fire extinguisher, readily accessible; (4) a manually operated bilge pump; (5) suitable anchor and cable; (6) fog horn; (7) marine compass; and (8) suitable charts for piloting.

6.0 SCORING

- 6.1 The Low Point Scoring System RRS A4.1 will be used to score finishing boats.
- 6.2 RRS A9 will apply. RRS A4.2 is deleted.
- 6.3 For the purposes of qualifying the fleet for the season, a race that is abandoned shall be listed as a valid race for any boat that came to the starting area.

7.0 SAILING INSTRUCTIONS

- 7.1 Sailing instructions, notices to competitors, and changes to the sailing instructions will be posted on the YRA website to be downloaded by the entrant:
- 7.2 Entrants may request that sailing instructions, notices to competitors, and changes to the sailing instructions be sent by US Mail. This request may accompany their entry or thereafter, but must be in writing and include name, boat name, sail number, and address.

8.0 COMMUNICATIONS

- 8.1 RRS 25 is changed to allow for on-the-water radio communication between the Race Committee and racing boats on the VHF channel specified for that day. The RC may hail OCS and may advise the fleet starting order by loud hailer and/or VHF radio.

9.0 DISCLAIMER OF LIABILITY

9.1 Competitors participate in YRA racing entirely at their own risk. See RRS 4, decision to race. Neither the organizing authority nor the sponsoring yacht clubs will accept any liability for material damage or personal injury or death sustained in conjunction with, or prior to, or after any race.

Appendix A

HOST CLUBS

<u>Host Club</u>	<u>Committee Chair</u>	<u>Phone & E-mail</u>	
San Francisco YC	Anne McCormack	415-789-5647	race@sfdc.org
St. Francis YC	John Craig	415-563-6363	raceoffice@stfyc.com
Berkeley YC	Bobbi Tosse	925-939-9885	race@berkeleyyc.org
Sausalito YC	J. Rigler	415-332-6367	race@syconline.org
Regatta Pro	Jeff Zarwell	415-595-8364	jzarwell@regattapro.com
Bay View Boat Club	John Super	415-664-0409	johnsuper@joimail.com
Richmond YC	Doug McVae	415-479-5558	mdkeith@pacbell.net

CLASS OFFICERS

<u>Division</u>	<u>Flag</u>	<u>President or Contact</u>	<u>Address</u>	<u>Phone & E-mail</u>
IOD	O	Henry Hernandez	1708 Willow St., Alameda, CA 94501	510-306-8846 henry@sfiod.org
Knarr	K	Sean Svendsen	1851 Clement Ave., Alameda, CA 94501	510-864-8403 sean@svendsens.com
Bird	R	Dan Mclean	2397 Paradise Dr., Tiburon, CA 94920	415-789-5989 danmclean555@comcast.net
Folkboat	F	Bill Madison	762 Funston Ave., San Francisco, CA 94118	415-752-2324 wmadison@joneshall.com

WBRA OFFICERS

President	Bob Thalman	9 Mt. Tenaya Ct, San Rafael, CA 94903	415-479-3281 bobthalman@aol.com
YRA Representative	Don Wilson	633 Woodmont Avenue Berkeley, CA 94708	510-527-1619 windansea@sprintmail.com

WOODEN BOAT RACING ASSOCIATION

A Chartered Association of the Yacht Racing Association of San Francisco Bay

2006 RACING SEASON

SAILING INSTRUCTIONS – Revised 4/26/06

Organizing Authority: The YRA of San Francisco Bay

1.0 RULES

- 1.1 Races will be governed by the *rules* as defined in *The Racing Rules of Sailing*. **These sailing instructions replace the YRA Standing Sailing Instructions and WBRA Special Instructions.**
- 1.2 RRS 40.1 is changed as follows: All competitors are required to wear life jacket or other adequate personal flotation device while racing.

2.0 NOTICES TO COMPETITORS AND CHANGES TO SAILING INSTRUCTIONS

- 2.1 Notices to competitors will be posted on the YRA website, and by US Mail to entrants conforming to Notice of Race (NOR) 7.2.
- 2.2 Changes to the sailing instructions will be posted on the YRA website, and mailed to entrants conforming to Notice of Race (NOR) 7.2, by 5 PM the Monday before they will take effect.

3.0 SCHEDULE OF RACES

- 3.1 Dates of races, time of first warning signal, venues, host YC, VHF channel, and class participation, are given on Attachment 1.

4.0 CLASS FLAGS

- 4.1 Class flags will be International Code Flags:

<u>Class</u>	<u>Flag</u>
IOD	O
Knarr	K
Bird	R
Folkboat	F

5.0 COURSES

- 5.1 The courses and marks are described on Attachment 2.
- 5.2 The courses to be sailed will be displayed by the Race Committee (RC) with numeric International Code Flags.

6.0 THE START

- 6.1 Races will be started by using RRS 26. The anticipated starting sequence for the first race of each day is IOD, KNARR, BIRD, FOLKBOAT; however the RC may change this sequence in the event of unexpected circumstances.
- 6.2 After the first races each day, a second sequence of starts will be made as soon as practicable. To begin a second sequence, the RC will alert boats that another sequence of races will begin shortly by using a series of short sound signals. The RC may also make radio announcements on the VHF channel designated for that day.
- 6.3 At the discretion of the RC, the starting sequence for the second series of races may begin while there are still boats on the race course sailing the first race. If in this case, the RC also determines that circumstances favor a different starting sequence of classes from the above, or different timing between classes, the timing of the warning signal (and class flag) for a particular class may be changed.
- 6.4 On specified dates given in Attachment 1, the RC will have discretion to start a third race, for the KNARR fleet only. This third race would start no later than 3:00 PM. If the RC elects to run a third race, it will raise the KNARR class flag at the finish of the second race and may notify the participants on the designated VHF channel.
- 6.5 A boat whose preparatory signal has not been made shall keep clear of the starting area and of all boats whose preparatory signal has been made.
- 6.6 Boats shall not start later than 10 minutes after their signaled start.

7.0 RECALLS

- 7.1 **INDIVIDUAL RECALL.** In addition to provisions of RRS 29.1, the RC may hail OCS boats by VHF radio on the designated channel. Failure of a hail, failure of a boat hearing the hail, or the order of hails shall not be grounds for redress.

8.0 STARTING AND FINISH LINES

- 8.1 The Start/Finish line (S/F) will be a line between a yellow or orange flag or orange panel on the RC boat, or a panel on the club house race deck, and the Start/Finish mark specified in the course descriptions. The RC boat may set a limiting mark (which shall be considered part of the RC boat) close to her and on the same end of the starting line to protect her.
- 8.2 If the S/F is between StFYC Mark A and a panel on the StFYC race deck, StFYC Mark B is a limiting mark when starting or finishing.

9.0 RESTRICTED AREAS

- 9.1 For safety reasons, lines between the following objects and the closest points ashore from them are restricted: Vertical 'H' beam off Water Quality Control Plant west of StFYC, bell buoy 7 off the west end of

Alcatraz, and Point Blunt buoy off Angel Island. Boats shall not pass between Anita Rock and its buoy.

- 9.2 The above-mentioned areas and buoys are defined as obstructions. A boat that breaks this rule may not correct her error per RRS 28.1 and shall retire.

10.0 TIME LIMIT

- 10.1 A time limit of three hours is set for each class if racing two races, and five hours for each class racing single races. RRS 35 is modified to state that boats finishing later than 30 minutes after the first class boat finished will be scored as DNF.

11.0 INTERFERENCE WITH OTHER VESSELS

- 11.1 Rule 9 of the Inland Rules of the Road applies. Boats shall not impede the passage of a vessel which can safely navigate only within a narrow channel or fairway (see US Dept. of Commerce chart 18649 for designated shipping channels and fairways) A violation of Rule 9 is subject to protest by any competitor or the RC, and is not exonerated by an alternate penalty. RRS 60.3 is changed to add: "(d) call a hearing for an alleged breach of Rule 9 if notified by government, commercial or individual vessel of possible infraction. It shall also extend the time limit under RRS 61.3 to accept the information." A DSQ for violation of Rule 9 shall be considered a DNE.

12.0 SCORING

- 12.1 Scores will be assigned according to the NOR.

13.0 PROTESTS

- 13.1 Protests under RRS 61.1 shall be submitted in writing in accordance with RRS 61.2 and mailed to the YRA office not later than midnight on Monday following the regatta, or if Monday is a holiday, on Tuesday. Unless otherwise agreed to by all parties, protests will be heard at the clubhouse of the sponsoring yacht club on the third Monday following the race at 1930, or if that Monday is a holiday, it shall be held on following Tuesday. Yacht clubs are responsible for sending a copy of the protest to the protested boat along with notification of the time and place of the hearing to parties to the protest.

Attachment 1

WBRA CALENDAR 2006

<u>Date</u>	<u>Day</u>	<u>First Warning</u>	<u>Number Races</u>	<u>Location</u>	<u>Host</u>	<u>Radio Channel</u>	<u>Tide at Golden Gate</u>	<u>Participation by Class</u>			
								<u>IOD</u>	<u>KN</u>	<u>BI</u>	<u>FO</u>
4/29	Sat	1055	2	City Front, A*	StFYC	63	4.3F (1236)	2	2	2	2
5/20	Sat	1055	2	Olympic Circle	SFYC	65	3.7E (1045)	2	2	-	2
6/04	Sun	1055	2+	City Front, A*	StFYC	63	2.4F (1111)	2	2+	2	2
6/25	Sun	1225	2	South Bay	BVBC	69	4.1F (1138)	2	2	-	2
8/06	Sun	1225	2	Southampton	RYC	71	3.2F (0931)	2	2	1	2
8/12	Sat	1055	2	Knox	SYC	71	4.1F (1328)	2	2	2	2
8/26	Sat	1055	2	Knox	Regatta Pro	71	3.1F (1249)	2	2	2	2
9/09	Sat	1055	2+	City Front, X	BYC	78	4.1F (1214)	2	2+	1	2

* StFYC may use a temporary inflatable mark ("CB" = Center Bay) instead of A

+ The RC may elect to start a third race for the KNARR Class only (SI 6.4).

Attachment 2

CITY FRONT COURSES									
COURSE	START	MARK	MARK	MARK	MARK	MARK	MARK	FINISH	DIST
1	A/CB/X	16s	17s	6s	-	-	-	A/CB/X	5.5
2	A/CB/X	16s	17s	18s	-	-	-	A/CB/X	7.5
3	A/CB/X	16s	17s	21s	-	-	-	A/CB/X	7.0
4	A/CB/X	16s	17s	6s	17s	6s	-	A/CB/X	9.1
5	A/CB/X	16s	17s	16p	6p	-	-	A/CB/X	7.1
6	A/CB/X	16s	17s	16s	17s	6s	-	A/CB/X	9.1
7	A/CB/X	16	6	A	6	16	6	A/CB/X	7.8
8	A/CB/X	16	6	A	6	-	-	A/CB/X	4.5
9	A/CB/X	16	6	-	-	-	-	A/CB/X	3.4
10	A/CB/X	16	18	-	-	-	-	A/CB/X	6.1
11	A/CB/X	16	21	-	-	-	-	A/CB/X	6.3
12	A/CB/X	16	6	16	6	-	-	A/CB/X	6.8
13	A/CB/X	16	18	16	6	-	-	A/CB/X	9.4
14	A/CB/X	16	21	6	21	-	-	A/CB/X	9.7
15	A/CB/X	16	21	16	21	-	-	A/CB/X	12.5
16	A/CB/X	W1	L1	-	-	-	-	A/CB/X	4.0
17	A/CB/X	W1	L1	W1	L1	-	-	A/CB/X	8.0

FOR COURSES 7-17 LEAVE ALL MARKS EXCEPT A/X TO PORT IF RED FLAG, OR STARBOARD IF GREEN FLAG IS DISPLAYED

STFYC MAY USE AN OFFSHORE START/FINISH LINE "CB" (CENTER BAY) INSTEAD OF MARK A

SOUTH BAY AND SOUTHAMPTON SHOAL

On 6/25 the South Bay start/finish line (S/F) will be approximately 0.6 NM south of YRA Mark SC1 (GR "SC" FI G (2+1)), east of Mission Rock Terminal.

On 8/06 the Southampton start/finish line (S/F) will be approximately 0.5 to 1.0 NM east to northeast of Southampton Shoal, YRA Mark 14.

COURSE	START	MARK	MARK	MARK	MARK	FINISH	DIST
1	S/F	W1	L1	-	-	S/F	4.0
2	S/F	W1	L1	W1	L1	S/F	8.0

ALL MARKS ARE ROUNDED TO PORT

BERKELEY OLYMPIC CIRCLE COURSES

COURSE	START	MARK	MARK	MARK	MARK	FINISH	DIST
1	XOC	AOC	EOC	-	-	XOC	4.0
2	XOC	BOC	FOC	-	-	XOC	4.0
3	XOC	COC	GOC	-	-	XOC	4.0
4	XOC	D	HOC	-	-	XOC	4.0
5	XOC	EOC	AOC	-	-	XOC	4.0
6	XOC	FOC	BOC	-	-	XOC	4.0
7	XOC	GOC	COC	-	-	XOC	4.0
8	XOC	HOC	D	-	-	XOC	4.0
9	XOC	8	BOC			XOC	6.9
10	XOC	8	BOC	FOC	BOC	XOC	11.3
11	XOC	W1	L1	-	-	XOC	4.0
12	XOC	W1	L1	W1	L1	XOC	8.0

ALL MARKS ARE ROUNDED TO PORT

A "TWICE AROUND" COURSE WILL BE SIGNALLED BY A "T" FLAG OVER THE COURSE NUMBER

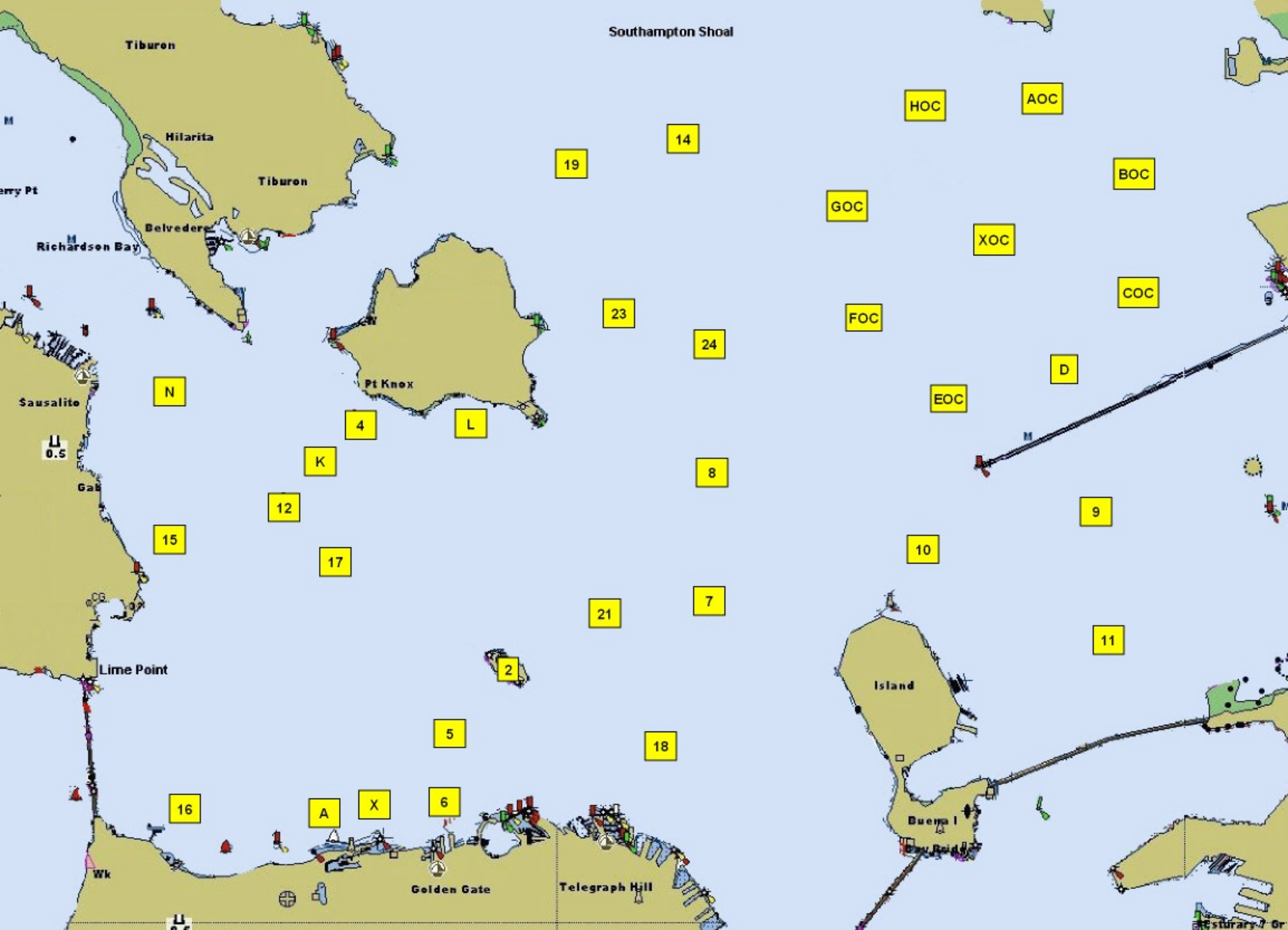
KNOX COURSES

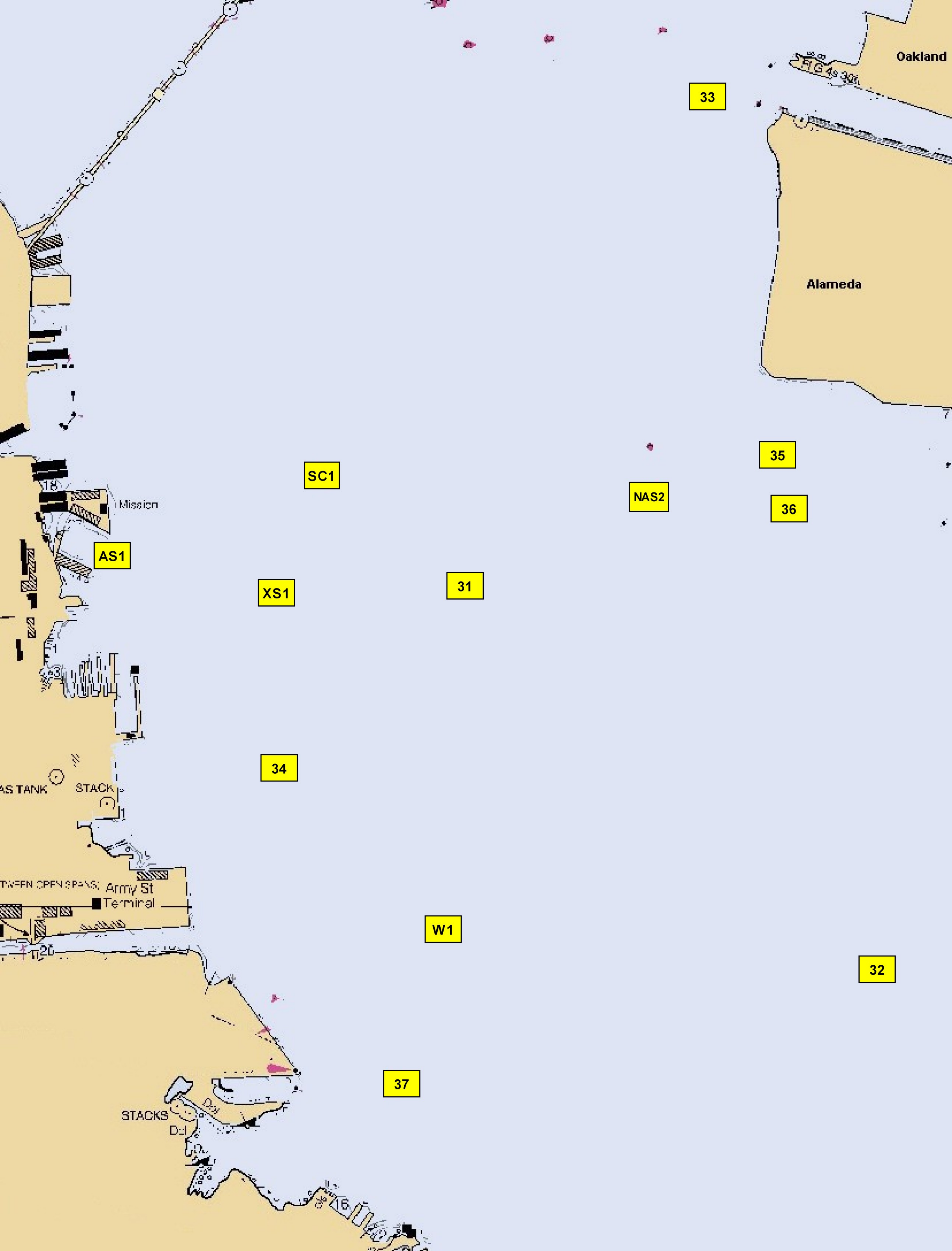
COURSE	START	MARK	MARK	MARK	MARK	MARK	FINISH	DIST
1	K	15	L	-	-	-	K	4.0
2	K	15	4	15	4	-	K	5.2
3	K	15	21	L	-	-	K	6.2
4	K	15	4	15	L	-	K	6.6
5	K	15	5	23	-	-	K	7.0
6	K	15	L	12	L	-	K	7.2
7	K	15	L	15	L	-	K	8.0
8	K	15	21	L	15	L	K	9.5
9	K	N	15	5	-	-	K	5.6
10	K	N	15	21	-	-	K	6.9
11	K	N	5	N	5	-	K	10.5
12	K	W1	L1	-	-	-	K	4.0
13	K	W1	L1	W1	L1	-	K	8.0

ALL MARKS ARE ROUNDED TO PORT

DESCRIPTION OF MARKS

- Buoys of Olympic circle: AOC, BOC, COC, EOC, FOC, GOC, HOC, XOC
- W1 Temporary inflatable mark approx. 1.0 nm to windward of S/F line
 - L1 Temporary inflatable mark approx. 1.0 nm to leeward of S/F line
 - A Yellow sphere "A" Outer Buoy St. Francis Yacht Club
 - B Yellow sphere "B" Inner Buoy St. Francis Yacht Club
 - D Fl G 4s 15 ft "3" on Olympic Circle
 - K Temp YC Buoy 0.3 nm SW of YRA 4 and in line with YRA 4 and YRA 12
 - N Fl R 4s 14 ft "2" on channel East of Sausalito
 - L Temp YC Buoy 0.3 nm West of Pt. Blunt in line with YRA 4
 - X Yellow/Blue sphere "X" Golden Gate Yacht Club
 - 4 R "2" Fl 4s Pt Knox
 - 5 Temp YC Buoy Approx. 0.6 nm SW of Alcatraz
 - 6 Yellow Sphere "M" 200 yd North of Ft Mason Docks
 - 8 R "4" Fl 4s Horn 1 nm East of Point Blunt
 - 14 Southampton Shoals
 - 15 Yellow Buoy "Y" Approx. 0.5 nm East of Yellow Bluff (Sausalito vicinity)
 - 16 Yellow Sphere "C" 0.2 nm East of Ft Point - "Blackaller"
 - 17 RG "HR" Fl (2+1) R6s Harding Rock
 - 18 RG "BR" Fl (2+1) G6s Bell, Blossom Rock
 - 21 G "1" Fl G6s Approx. 0.65 nm NE of Alcatraz
 - 23 RW "A" Mo (A) East of Angel Island
 - SC1 Red & Green "SC" Fl G (2+1) approx. 1 nm ENE of Mission Rock Term





Oakland

Alameda

33

35

36

32

SC1

NAS2

31

XS1

34

W1

37

Mission

AS1

AS TANK

STACK

BETWEEN OPEN SPANS: Army St Terminal

STACKS

D-1

D-2

16

17

18

19

20

21

22

23

24

25

26

27

28

29

30

31

32

33

34

35

36

37

38

39

40

41

42

43

44

45

46

47

48

49

50

51

52

53

54

55

56

57

58

59

60

61

62

63

64

65

66

67

68

69

70

71

72

73

74

75

76

77

78

79

80

81

82

83

84

85

86

87

88

89

90

91

92

93

94

95

96

97

98

99

100