



The YRA 2nd Half Opener July 27th & 28th, 2013 **SAILING INSTRUCTIONS – REV 7/23**

Encinal Yacht Club
1251 Pacific Marina
Alameda, California 94501

YRA of SF Bay
1070 Marina Village Prky, Ste 202-G
Alameda, CA 94501

- 1.0 **RULES:** The races will be governed by the rules as defined by *The Racing Rules of Sailing* and the YRA *Standing Sailing Instructions*, except as any of these are changed by these sailing instructions. *The J 105 Class will be sailing under the J 105 Fleet #1 class rules.
- 2.0 **ENTRIES:** The regatta is open to all qualified yacht owners who are sailing members of YRA, or have paid a one-time entry fee for this YRA event, and whose division or class is listed in the starting sequence.
- 3.0 **SATURDAY START:** Approximately 1 mile south of the entrance to the Oakland Estuary, between a temporary YC buoy, and an Orange Flag on the Committee boat. **The first warning is at 1155 hours. See Attachment 3 (Published Separately).**
- 3.1 **SATURDAY FINISH:** Between an Orange temporary YC buoy and an Orange Flag on the end of the Encinal YC dock, **or** an orange flag on the race committee boat moored at the end of the Encinal YC dock. If the race committee elects to shorten course, the EYC stake boat will take station in the vicinity of the red day marker at the entrance to the Oakland/Alameda Estuary. The shortened course finish line will be between an orange temporary YC buoy and an orange Flag on the Committee boat at the mouth of the estuary. This modifies RRS 32.2.
- 3.2 **SATURDAY COURSE AND MARKS:** All Marks to be rounded to Port. See Attachment 1 for Description of Marks and Course Diagram

COURSE	START	MARK	MARK	MARK	FINISH	MILES
1	S	W	J	LM	F	21

- 3.3 **SATURDAY TIME LIMIT:** All yachts not finishing by 2000 hours shall be scored DNF. This changes RRS 35. Boats that retire from the race shall inform the Race Committee via VHF Channel 72 or telephone 510-522-3272 or 510-812-5470 that they are retiring. .
- 4.0 **SUNDAY START/FINISH:** Approximately 1 mile south of the entrance to the Oakland Estuary, between a temporary YC buoy, and an Orange Flag on the Committee boat. **The first warning is at 1155 hours. See Attachment 4. (Published Separately) Competitors should pay particular attention to possible combined fleet starts.**
- 4.1 **SUNDAY COURSE AND MARKS:** The course to be sailed will be displayed by the Race Committee with numeric International Code Flags. All marks to be rounded to Port. See Attachment 2 for Description of Marks and Course Diagram

COURSE	START	MARK	MARK	MARK	MARK	MARK	MARK	MARK	MARK	MARK	MARK	MARK	MARK	FINISH	MILES
1	S	W	WO											F	4
2	S	W	WO	LM	W	WO								F	8
3	S	W	WO	LM	W	WO	LM	W	WO					F	12

- 4.2 SUNDAY TIME LIMIT:** All yachts not finishing by 1700 hours shall be scored DNF. This changes RRS 35. Boats that retire from the race shall inform the Race Committee via VHF Channel 72 or telephone 510-522-3272 or 808-864-3515 that they are retiring.
- 5.0 COMMUNICATIONS:** The Race Committee will attempt to hail boats for OCS and other pertinent information on VHF Channel 72. **CHECK IN IS NOT REQUIRED**. Boats are also encouraged to monitor VHF Channel 14 for updates on large vessel traffic.
- 6.0 RESTRICTED AREAS, HAZARDS, ETC:**
- 6.1** The area between day mark R8 (south side of the estuary entrance) and the Alameda shore is restricted
- 6.2** Boats whose preparatory signal has not been made shall keep clear of any boat whose preparatory signal has been made. Boats shall not cross the Start line except when preparing to start or starting. Boats observed by the race committee to be in violation of this instruction will be scored DNF without a hearing. This changes RRS 63.1.
- 6.3** Any physical contact with the Committee Boat SHALL NOT be exonerated. This changes RRS 31.2.
- 7.0 COMMERCIAL TRAFFIC, SAFETY:**
- 7.1** Boats shall not impede the passage of commercial vessels and shall comply with USCG Navigation Rules. If a commercial vessel has sounded five blasts, and the vessel or the Coast Guard identified the boat by sail number, the Race Committee shall protest the boat, in which case the Protest Committee shall assume that the identified boat has impeded passage or violated USCG Navigation Rules, and the identified boat shall have the burden of proving otherwise. In the case of a complaint by VTS or the Coast Guard, the protest time limit shall be extended up to two days after the conclusion of the regatta. This changes RRS61.3. Compliance with RRS 60.2(a) shall not be required.
- 7.2** A Race Committee boat may signal a boat to alter course to avoid impeding the passage of commercial vessels by making a sound signal (horn or whistle) and pointing Code Flag V (a white square with a red X) at the offending boat. The signaled boat shall comply with the signal unless compliance would create an unsafe condition. If a boat fails to comply with such a signal, the Race Committee shall protest the boat, in which case the Protest Committee shall assume that the course alteration would not have created an unsafe condition, and the protested boat shall have the burden of proving otherwise.
- A boat may be penalized under SI 7.1 even if it does not violate SI 7.2, and a boat may be penalized under SI 7.2 even if it does not violate 7.1. A violation of any part of SI 7 may not be exonerated by a Scoring Penalty. A disqualification under any part of SI 7 shall not be excludable under RRS A2 for boats sailing a YRA series. The EYC will cooperate with and provide information relevant to any investigations of impeding passage or violation of USCG Navigation Rules by the Coast Guard or other governmental authority.
- 8.0 SCORING:** The Race Committee reminds participants it is their responsibility to note their finish times, other boats finishing near them and the order of finish to assist in the event of omission or error in recording.
- 9.0 PROTESTS:** In accordance with YRA Standing Sailing Instructions, except that Protests must be written on US Sailing Protest forms and postmarked or electronically transmitted (fax or email) to the YRA office by **Tuesday, July 30, 2013**.
- 10. RELEASE OF LIABILITY:** Sailing is an activity that has an inherent risk of damage and injury. Competitors in this event are participating entirely at their own risk. See RRS 4,

Decision to Race. The organizer (organizing authority, race committee, protest committee, host club, sponsors, or any other organization or official) will not be responsible for damage to any boat or other property or the injury to any competitor, including death, sustained as a result of participation in this event. By participating in this event, each competitor agrees to release the race organizers from any and all liability associated with such competitor's participation in this event to the fullest extent permitted by law.

ATTACHMENT 1

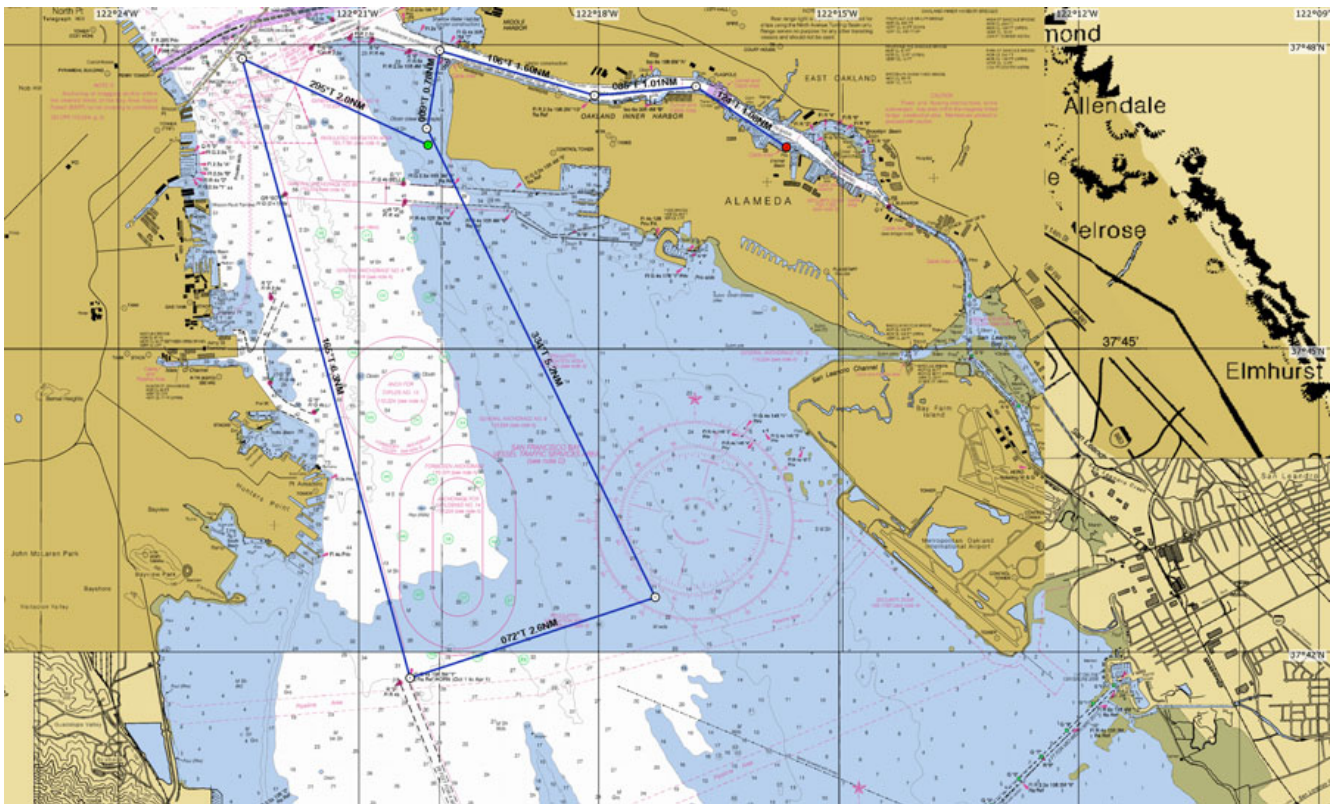
Description of Marks - SATURDAY

W – Temporary yacht club buoy approximately 2 miles upwind from the start in the vicinity of the Bay Bridge

JM – Green Daymark “1”, Fl G 4s, approximately 2 miles SE of Candlestick Point

LM – Temporary yacht club buoy approximately 2.5 miles E of the “JM” mark, on a line between JM and the Oakland Airport Tower

Course Diagram:

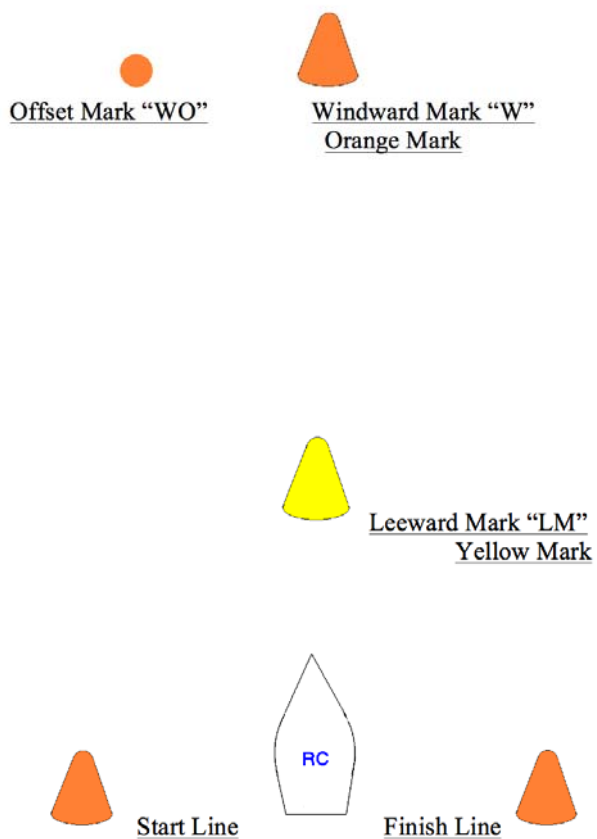


ATTACHMENT 2

Description of Marks - SUNDAY

W – Orange Inflatable, temporary yacht club buoy
WO – orange sphere, temporary yacht club buoy
LM – Yellow Inflatable, temporary yacht club buoy

Course Diagram:



ATTACHMENT 3

SCHEDULED START TIME AND SIGNALS- SATURDAY

LATE STARTS: A yacht shall not start later than 15 minutes after her starting signal.

Race 2nd Half Opener Day and Date Saturday, July 27, 2013 Time of Warning Signal and shape 1155 hours First Division(s) Warning

<u>FLEET</u>	<u>SIGNAL</u>	<u>DIVISION FLAG</u>
PHRF 1 (ratings 66 & Under)	WARNING	A = ALPHA
PHRF 2 (ratings 69 to 99)	WARNING	C = CHARLIE
Sportboats	WARNING	D = DELTA
Express 37	WARNING	E = ECHO
PHRF 3 (ratings 102 to 123)	WARNING	F = FOXTROT
SF 30's	WARNING	G = GOLF
Express 27	WARNING	J = JULIET
PHRF 4 (ratings 126 to 162)	WARNING	K = KILO
Islander 36	WARNING	M = MIKE
PHRF 5 (ratings 165 to 189)	WARNING	N = NOVEMBER
Non-Spinnaker, SF 180, Shorthanded	WARNING	O = OSCAR
PHRF 6 (ratings 192 & up)	WARNING	Q = Quebec
Multihulls	WARNING	R = ROMEO

STERN DIVISION FLAGS ARE NOT REQUIRED FOR THE 2nd HALF OPENER RACE.

Alphabetical Listing of Fleet Flag Assignments

<u>FLEET</u>	<u>FLAG</u>	<u>FLEET</u>	<u>FLAG</u>
Express 27	J = JULIET	PHRF 4	K = KILO
Express 37	E = ECHO	PHRF 5	N = NOVEMBER
Islander 36	M = MIKE	PHRF 6	Q = QUEBEC
Multihulls	R = ROMEO	SF 30	G = GOLF
Non-Spinnaker	O = OSCAR	SF 180	O = OSCAR
PHRF 1	A = ALPHA	Short-Handed	O = OSCAR
PHRF 2	C = CHARLIE	Sportboat	D = DELTA
PHRF 3	F = FOXTROT		

ATTACHMENT 4

SCHEDULED START TIME AND SIGNALS- SUNDAY

LATE STARTS: A yacht shall not start later than 15 minutes after her starting signal. **Competitors should pay particular attention to combined fleet starts.**

Race 2nd Half Opener Day and Date Sunday, July 28, 2013 Time of Warning Signal and shape 1155 hours First Division(s) Warning

<u>FLEET</u>	<u>SIGNAL</u>	<u>DIVISION FLAG</u>
PHRF 1 (ratings 66 & Under)	WARNING	A = ALPHA
PHRF 2 (ratings 69 to 99)	WARNING	C = CHARLIE
Sportboats	WARNING	D = DELTA
Express 37	WARNING	E = ECHO
PHRF 3 (ratings 102 to 123)	WARNING	F = FOXTROT
SF 30's	WARNING	G = GOLF
Express 27	WARNING	J = JULIET
PHRF 4 (ratings 126 to 162)	WARNING	K = KILO
Islander 36	WARNING	M = MIKE
PHRF 5 (ratings 165 to 189)	WARNING	N = NOVEMBER
Non-Spinnaker, SF 180, Shorthanded	WARNING	O = OSCAR
PHRF 6 (ratings 192 & up)	WARNING	Q = Quebec
Multihulls	WARNING	R = ROMEO

STERN DIVISION FLAGS ARE NOT REQUIRED FOR THE 2nd HALF OPENER RACE.

Alphabetical Listing of Fleet Flag Assignments

<u>FLEET</u>	<u>FLAG</u>	<u>FLEET</u>	<u>FLAG</u>
Express 27	J = JULIET	PHRF 4	K = KILO
Express 37	E = ECHO	PHRF 5	N = NOVEMBER
Islander 36	M = MIKE	PHRF 6	Q = QUEBEC
Multihulls	R = ROMEO	SF 30	G = GOLF
Non-Spinnaker	O = OSCAR	SF 180	O = OSCAR
PHRF 1	A = ALPHA	Short-Handed	O = OSCAR
PHRF 2	C = CHARLIE	Sportboat	D = DELTA
PHRF 3	F = FOXTROT		