

ODCA SOUTH BAY ALAMEDA SIDE RACE

May 19, 2007, 2 Race Day

**Sponsored by the Encinal Yacht Club
1251 Pacific Marina
Alameda, CA 94501
(510) 522-3272**

START/FINISH LINE: An imaginary line between an orange flag or panel on the Race Committee Boat and Mark (S/F). See Diagram.

SCHEDULED START TIME AND ORDER:

Fleet	Flag	Start No.	Time	PHRF
<i>Warning</i>			1300	
Express 37	FOXTROT	1		72
Antrim 27	ALPHA	1		75
Beneteau 36.7	JULIET	1		75
Olson 30	HOTEL	1		99
Islander 36	ECHO	1		144
Olson 25	DELTA	1		159
Santana 22	WHISKEY	1		234
Express 37	FOXTROT	2		72
Antrim 27	ALPHA	2		75
Beneteau 36.7	JULIET	2		75
Olson 30	HOTEL	2		99
Islander 36	ECHO	2		144
Olson 25	DELTA	2		159
Santana 22	WHISKEY	2		234

Reminder: Classes shall start the first race on a two-race day in order listed on the schedule, with classes that have dropped out of a race day eliminated from the sequence to compress starts. Race number two shall start according to YRA 13.0.

RADIO COMMUNICATIONS: The Race committee will be on Channel 66.

RACING AREA: South Bay, from a Start Area located approximately .5 NM, WSW of 2NAS, at the approximate Lat./Lon. Of N37 46'14. 5 - W122 21'02. 5. The coordinates are provided for reference only.

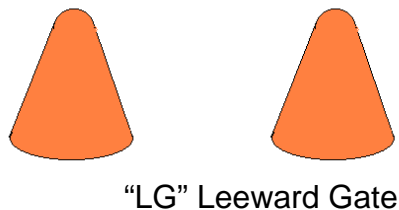
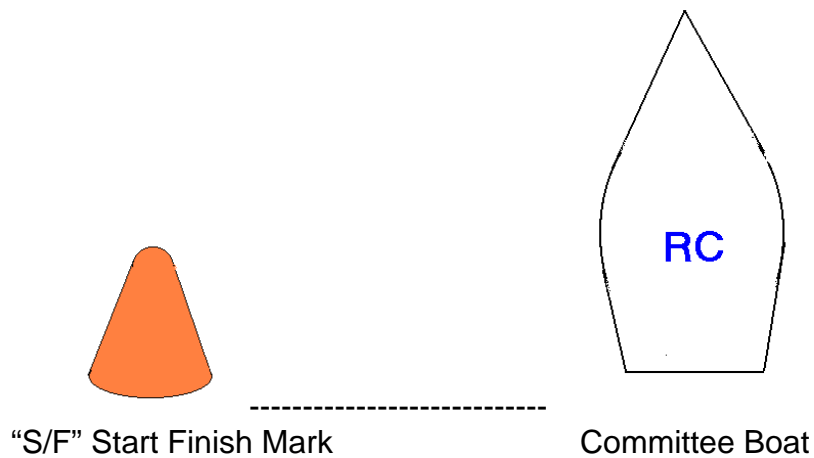
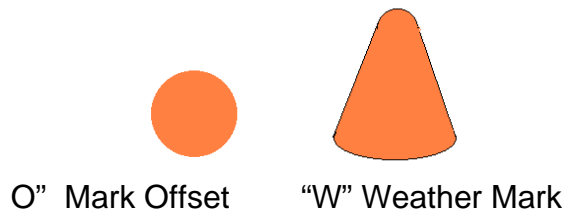
RESTRICTIONS: The Start Finish Line is restricted to all boats that are not starting or finishing a race.

PROTEST: In accordance with the YRA Standing Sailing Instructions. Address for the YRA office is YRA, Quarters 35S Fort Mason, San Francisco, 94123.

RACE COMMITTEE CHAIRMAN: Charles Hodgkins, 510-504-4076

COURSES AND MARKS: The Diagram (next page) shows approximate relative positions of the marks and the Start/Finish Line. The Race Committee will signal the bearing to Mark W with numerical flags. All Marks of the Course will be approximately 1.5 nautical miles from the Start/Finish. The Start/Finish Mark will be a Temporary Yacht Club Buoy. Marks W, O, and LG will be orange tetrahedrons.

Round All Marks to Port, except "LG" Leeward Gate: pass between "LG" and round either side.
All Marks are temporary YC buoys.



Course 1: S/F – W – O – LG – S/F
Course 2: S/F – W – O – LG – W – O – LG – S/F
Course 3: S/F – W – O – LG – W – O – LG – W – O – LG – S/F

Round All Marks to Port, except "LG" Leeward Gate: pass between "LG" and round either side.
All Marks are temporary YC buoys.

SAILING INSTRUCTIONS FOR THE YACHT RACING ASSOCIATION OF SAN FRANCISCO BAY

(Effective January 1, 2007)

WBRA RACERS – The WBRA uses a separate Notice of Race and Sailing Instructions which are available for download from the YRA website. You can request a hard copy be mailed to you by contacting info@yra.org or calling (415) 771-9500.

1.0 RULES: Races will be governed by the Racing Rules of Sailing, 2005-2008 (RRS), Charter Association Rules and Class Rules all as modified by these sailing instructions, and these sailing instructions. Between the hours of sunset and sunrise, the Steering and Sailing Rules from IRCAS (International Rules for Prevention of Collisions at Sea—effective 1977) and the Unified Inland Rules (effective 1981) shall replace Part 2 of the RRS. Preamble to RRS Part 2 applies. Competitors are advised that non-competing boats are not governed by RRS and that IRCAS or Unified Inland Rules govern meetings with non-competing boats.

2.0 SAFETY: Boats shall not impede the passage of a vessel which can safely navigate only within a narrow channel or fairway (see US Dept. of Commerce chart 18649 for designated narrow channels and fairways of SF Bay) or fishing or other vessels with restricted ability to maneuver. Boats identified who endanger their own safety, other sail boats, or that of a commercial or government vessel will be subject to protest by a Race Committee (RC) or contestant and face possible disqualification. RRS 60.3 is modified to add (d) to read: A hearing for allegations of the above will be instigated by a protest committee if notified by government, commercial or individual vessel of possible infraction. It shall also extend the time limit under RRS 61.3 to accept the information. A DSQ for a safety violation shall be considered as a disqualification not excludable (DNE).

2.1 MINIMUM EQUIPMENT: Boats must comply with the United States Coast Guard's requirements for recreational vessels, RRS 1.2, and minimum additional equipment prescribed by her Chartered Association.

3.0 DECISION TO RACE: As stated in RRS 4, a boat is solely responsible for deciding whether or not to start or to continue racing

4.0 ENTRIES: Races are open to boats that meet the rules of the Chartered Association in which they have entered to race and whose owners or charterers are members of YRA. Entries and appropriate boats' rating/handicapping certificates must be on file in the YRA office. The YRA office will maintain the Master Sailing Schedule. It will list the date, sponsor and location for YRA qualifying races for each Chartered Association. Only those sailing instructions officially published by the YRA Office are applicable for YRA races.

5.0 COURSES: Courses and starting times will be designated in the applicable Chartered Association Sailing Instructions.

6.0 MANAGEMENT: Each race shall be under the management of a race committee (RC) of the sponsoring yacht club, which shall have full power to enforce these Sailing Instructions.

7.0 SAIL NUMBERS: Boats sailing under ODCA, PHRF, IMS or IOR Rules can have their racing numbers assigned by the YRA. RRS 77 is deleted.

8.0 STARTING AND FINISHING LINES: Unless otherwise specified, the Start/Finish line will be a line between a yellow or orange flag or orange panel on the RC boat, or a panel on the club house race deck and the Start/Finish mark specified in the course descriptions. RC boat may set a limiting mark close to her and on the same end of the starting line to protect her. No boat shall pass between the limiting mark and the committee boat. Similarly, any inboard marks near shore-based RC platforms, e.g. StFYC Mark B, are to be considered limiting marks when starting or finishing. Limiting marks are considered marks of the course.

9.0 THE START: Races will be started using RRS 26 as modified. Times will be taken from the visual signals; the absence of a sound signal shall be disregarded.

Signal Flag(s)	Sound	Minutes before Start	Course Signal
WARNING Class or Group	1 gun or horn	5	Raise Course Signal
PREPARATORY P, I, or Z	1 gun or horn	4	
Drop PREP	1 horn	1	Drop Course Signal
START	1 gun or horn	0	

Warning signal for each succeeding class shall be made with or after the starting signal for preceding class.

NOTE: PREP Signal 'Black Flag' will not be used for YRA races.

Boats shall not start later than 10 minutes after their signaled start.

10.0 RESTRICTED AREAS:

10.1 For the purpose of RRS 18, 19, 28, the following objects shall be left to shoreward: Anita Rock and any buoy marking same, vertical 'H' beam off Water Quality Control Plant west of StFYC, bell buoy7 off the west end of Alcatraz, and Point Blunt buoy off Angel Island. Above obstructions are not marks of the course. The South Tower of the Golden Gate Bridge must be left to the South at all times. Any rocks visible at Mean Lower Low water immediately adjacent to Contra Costa County, Marin County or San Francisco shorelines shall be left to shoreward, except for Mile Rock, The Brothers and Red Rock.

10.2 RESTRICTED AREA-START/FINISH LINE: Boats whose preparatory signal has not been made shall keep clear of any boat whose preparatory signal has been made. Boats shall not cross the Start or Finish line except when preparing to start, starting or finishing. Boats observed by the race committee to be in violation of this instruction may be scored DNF without a hearing. This changes RRS 63.1. On courses signaled as twice around, boats shall NOT sail through start/finish line to start second rounding.

11.0 POSTPONEMENT: See definition of 'AP' in RRS Race Signals. One minute after ending a postponement period, the Warning signal will be made to signify resumption of regular sequence. Boats will then start in the order indicated. If lengthy postponements occur, RC may call on selected course radio channel to advise which fleet will be next in the start sequence.

12.0 RECALLS:

12.1 INDIVIDUAL RECALL: In addition to provisions of RRS 29.1, the RC may hail OCS boats by VHF radio. Failure of a hail, failure of a boat hearing the hail, or the order of hails shall not be grounds for redress (See 21.0).

12.2 GENERAL RECALL: In addition to provisions of RRS 29.2, add: If there is a second General Recall, that group will start after the last scheduled group of starters in first starting sequence on a course determined by the race committee.

13.0 TWO-RACE DAYS: At the discretion of the RC, the starting sequence for the second race may begin while there are still boats on the race course sailing the first race (this shall not relieve the RC of its obligation to finish these boats). Classes not scheduled for a second race will be eliminated from sequence to compress starts. To start the second race, the RC may sound two signals and drop the Blue Flag, followed in one minute by a Warning signal for the first start of the second series. RC may announce the starting fleet by radio. If the second sequence must be delayed, RC may fly Postponement flag and announce delay by radio (See 21.0) If not previously advised, a finishing fleet may request their approximate start from the RC boat or race deck.. A Warning will proceed one minute after lowering the 'AP' flag.

14.0 TIME LIMIT: Except for an ocean race, a time limit of three hours is set for each class on two race days and five hours for each class on single race days. RRS 35 is modified to state that boats finishing later than 30 minutes after the first class boat finished will be scored as DNF. This does not apply to the Vallejo Race or Second-Half Opener.

15.0 SCORING SYSTEM: The Low Point Scoring System RRS A4.1 will be used to score finishing boats. RRS 4.2 is modified to state, penalty points will be added to the number of boats that came to the starting area plus one for OCS, DNF,DNS or RAF (prior to protest hearing), plus two for DNC, and plus three for DSQ. A DSQ for Safety violation is considered as a (DNE) in addition to RRS 89.3(b). Ties will be broken in accordance with RRS A7 or A8 as appropriate. RRS A9 is deleted.

16.0 DAILY TROPHIES: Sponsoring clubs will indicate order of finish for all races they conduct and provide details to the YRA office in a timely manner. Charter Associations will provide trophies as follows: a first prize for any starters in a class/division; a second prize for four or more starters; a third prize for seven or more; a fourth prize for ten or more; and a fifth prize for fifteen or more.

17.0 SEASON CHAMPIONSHIPS: Scoring shall be in accordance with the system adopted by each class/division. The YRA shall provide a first place Season Championship trophy to each fleet that registers at least five boats, providing that at least one boat in the class/division qualifies by racing more than ½ of their scheduled races. For the purposes of qualifying the fleet for the season, a race that is abandoned shall be listed as a valid race for any boat that came to the starting area; however there will be no points scored for any boat.

18.0 PROTESTS: Protests under RRS 61.1 shall be submitted in writing in accordance with RRS 61.2 and mailed to the **YRA of San Francisco**, not later than midnight on Monday following the regatta, or if Monday is a holiday, on Tuesday. Protests will be heard at the clubhouse of the sponsoring yacht club on the third Monday following the race at 1930, or if that Monday is a holiday, it shall be held on following Tuesday. Yacht clubs are responsible for sending a copy of the protest to the protested boat along with notification of the time and place of the hearing to parties to the protest. Note: RRS 63.7 allows protests between boats in different races.

19.0 APPEALS:

19.1 A party to a protest may appeal a decision of a protest committee (PC) to the Race Administration Director at US SAILING (Box 1260, Portsmouth, RI 02871) within the 15-day time limit as provided by RRS F2.1.

19.2 HOW TO FILE AN APPEAL: If the protest committee has not provided written decision on protest, one may request the decision as noted in RRS 65.2. The season race packet contains "Guidelines for Presentation of Appeals". Transmit your letter of appeal and accompanying document, including a check payable to YRA of SF Bay for \$50 if you are a US SAILING member (\$100 if not a USSA member). US SAILING will record receipt of your material and forward it to our Association Appeals Committee for handling. US SAILING charges no fee for forwarding an appeal, but YRA of SF Bay requires that an administrative fee be paid (as above) before an appeal or a request will be considered.

2.0 ADVERTISING: No advertising which exceeds that allowed in ISAF REG 20 Category A is permitted, except as specified by a particular Chartered Association (ODCA or OYRA). The following restrictions apply to yacht clubs which have commercial sponsors for YRA races: (1) Except for trophies, anything given to racers by event sponsors or the yacht clubs must be given equally to all racers, and (2) No racer shall be required to display any material relating to sponsorship of the event.

2.1 ON THE WATER COMMUNICATIONS: RRS 25 is amended to allow for on-the-water radio communication between the RC and racing boats on the VHF channel for the particular course area specified in an individual race packet. The RC shall hail OCS and may advise the fleet starting order by loud hailer and/or VHF radio. See annual CG Blanket Permit with suggested VHF coordination frequencies.

HDA ADDITIONAL STANDING SAILING INSTRUCTIONS

1.0 HANDICAPS: The length of the race will be listed on the course sheet for the purpose of determining handicaps. HDA divisions are using the Time-on-Time (TOT) system of scoring and will use the listed course length when determining standings.

2.0 HDA DIVISION FLAGS: An Alpha Numerical code flag determined by the HDA Chartered Association denoting the assigned division must be flown from the backstay of each boat.

3.0 HDA LONG COURSE SERIES: This series has (1) throw-out.

ODCA ADDITIONAL STANDING SAILING INSTRUCTIONS

1.0 STARTING GROUPS: Racing group starting sequences are contained in the ODCA Calendar. It is available from the YRA office.

2.0 STARTING SEQUENCE FOR TWO RACE DAYS: Classes shall start the first race on a two-race day in order listed on the ODCA Calendar, with classes that have dropped out of a race day eliminated from the sequence to compress starts. Race number two shall start according to YRA 13.0.

OYRA ADDITIONAL STANDING SAILING INSTRUCTIONS

1.0 HANDICAPS: Length of the race listed on the course sheet is for information only. Scoring is on the basis of Time on Time (TOT).

2.0 STARTS---No Committee Boat on Station In the event that no committee boat is on station at Half Moon Bay or Drakes Bay, an OYRA Officer shall assume the responsibilities of the RC and shall start the classes using the most reasonable facsimile of the starting shapes as possible. Starting time for the OYRA Officer' boat shall be fifteen minutes after the last class has been started.

3.0 REPORTING AT START:

3.1 Each boat is responsible for successfully notifying the RC of her intention to race by radioing her sail number and fleet, and receiving an acknowledgment on the VHF channel indicated in the individual race instruction. A boat failing to successfully notify the Race Committee, per above, shall be scored DNS. This changes rule 63.1.

3.2 YRA SSI 9 is modified to state: Boats arriving to the start area later than 10 minutes after their fleet start may cross the start line 10 minutes after the last fleet starts if they have notified the RC of their intention by radio immediately after the last start and before the 10 minute period after the last start. A boat failing to notify the committee of sail number, fleet, and intention to start late will be scored as DNS.

4.0 PENALTIES: RRS 44.2 is not in effect. Penalties shall apply under RRS 44.3 using a penalty of 20%.

5.0 REPORTING FINISH: Boats finishing during the night will illuminate the boat's sail numbers to assist the RC. In addition, each boat should record her own finish time and note both the boat ahead and behind, whenever possible. Boats not finishing within the time limit or boats not completing the course, unless directly and specifically acknowledged by the RC, must report the fact to the YRA answering service at 415 771 9500. If not able to report while underway, telephone contact must be made immediately after coming ashore. **Any boat not so reporting will be scored points equal to a DSQ under SI 2 and is considered a DNE (Disqualification not excludable).**

6.0 OPTIONAL PERMITTED EQUIPMENT: Amends RRS 52 Powered Winches: No restriction is placed on the use of powered winches, powered hydraulics, or powered furling devices for those boats that have declared this information on their PHRF application. Only those boats that have declared this equipment and have been rated accordingly can sail in this configuration.

7.0 SHORT HANDED SAILING DIVISION:

7.1 Autopilots are allowed

7.2 Two jibs 'poled out' may be used for downwind sailing.

8.0 OYRA MINIMUM EQUIPMENT REQUIREMENTS: The OYRA Minimum Equipment Requirements checklist must be signed and submitted to the YRA office at the time of entry into an OYRA race. Boats not providing this document prior to 3:00 p.m. on Wednesday prior to the first race on Saturday will be scored DNS for that race and all continuing races until this document has been received

PARTY CIRCUIT ADDITIONAL SAILING INSTRUCTIONS

1.0 Party Circuit Series: To qualify for the Party Circuit Series championship, boats must race all at least one race day for both Vallejo and the 2nd Half Opener as well as the Summer Sailstice Regatta (3 race days total). In addition, 50% of the fleet or class must qualify for awards to be given.

2.0 SCORING: PC divisions are using the Time-on-Time (TOT) system of scoring.

WBRA Standing Sailing Instructions are in a separate document



Yacht Racing Association of San Francisco Bay

Quarters 35S, Fort Mason
San Francisco, CA 94123

Phone: 415.771.9500
Fax: 415.276.2378
Email: info@yra.org
Web: www.yra.org

YRA OF SF BAY MINIMUM EQUIPMENT REQUIREMENTS FOR BAY RACING*

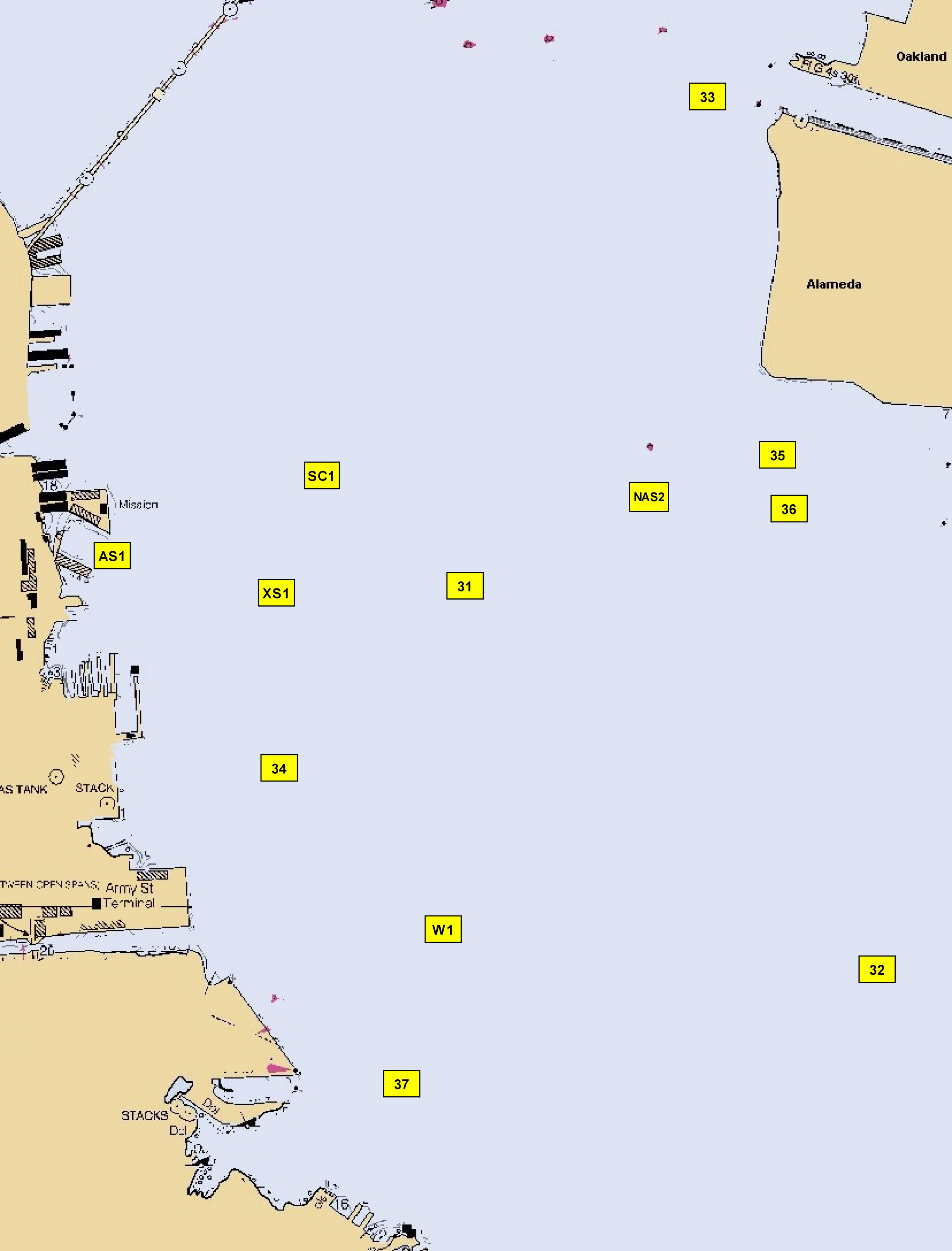
The following equipment shall be required for all yachts racing in YRA events:

1. USCG approved life jackets for each member of the crew
2. One horseshoe life ring or 18 inch diameter USCG approved ring buoy
3. USCG approved (or equivalent) fire extinguisher as required by USCG Rules, readily accessible
4. One manually operated bilge pump
5. One suitable anchor and cable
6. Fog horn
7. Marine compass
8. Suitable charts for piloting

Contestants are reminded that conditions on San Francisco Bay and the Pacific Coast are quite unpredictable, and winds in excess of 30 knots are not uncommon. The USSA rules state: "**It shall be the sole responsibility of each yacht to decide whether or not to start or continue the race.**"

We would further remind all contestants that as provided in the USSA rules: "Every yacht shall render all possible assistance to any vessel or person in peril, when in a position to do so." We will trust that all contestants will do everything in their power to make our sport of yacht racing as safe as it has been in the past.

***ADDITIONAL EQUIPMENT REQUIRED FOR OFFSHORE YACHT RACING ASSOCIATION (OYRA). SEE THE OYRA MINIMUM EQUIPMENT LIST FOR MORE INFORMATION.**



YRA DESCRIPTION OF MARKS --- South Bay APPENDIX B

- AS1 Yellow sphere approx. 0.25 nm East of BVYC
- NAS2 NAS Alameda Channel mark "R2" Fl R4s
- SC1 Red & Green "SC" Fl G(2+1) approx. 1 nm ENE of Mission Rock Term
- W1 Temp YC buoy approx. 1 nm East of Army St Terminal
- XS1 Temp YC buoy approx. halfway between 31 & AS1
- 31 Temp YC buoy approx. 1.2 nm SE of Mission Rock Terminal\
- 32 Fl Y 4s "A" Approx 2.5 nm East of Army St Terminal
- 33 FL R 4s Red "4" , Oakland Inner Harbor Entrance Channel
- 34 Fl R 2s Red "2" Approx 0.5 nm East of Portrero Point
- 35 Green daymark "3", Fl G2.5s, Alameda NAS Entrance Channel
- 36 Red daymark "4", Fl R4s, Alameda NAS Entrance Channel
- 37 G "5" Fl G4s, approx. 1 nm SSE of Army St. Terminal