

# YRA Spring 3 – Saturday, June 18, 2011

Hosted by the South Beach Yacht Club, 415-495-9500

Race Committee PRO: Tad Sheldon, 408-688-1355

## SAILING INSTRUCTIONS – Revised 6/14/11

### 1.0 RULES

- 1.1 Races will be governed by the *rules* as defined in the current version of *The Racing Rules of Sailing*. **These sailing instructions replace the YRA Standing Sailing Instructions.**

### 2.0 CHANGES TO THE SAILING INSTRUCTIONS

- 2.1 Changes to the sailing instructions will be posted on the YRA website, and mailed to entrants conforming to YRA Spring/Summer Series Notice of Race (NOR) 7.3, by 5 PM the Wednesday before they will take effect.

### 3.0 CLASS FLAGS

#### 3.1 HDA Classes

|                     | <u>Flag</u> |
|---------------------|-------------|
| HDA G (123 & Under) | G (GOLF)    |
| HDA F (Sportboats)  | F (FOXTROT) |
| HDA D (SF 30's)     | D (DELTA)   |
| HDA K (126 & Up)    | K (KILO)    |

- 3.2 Class flags **are required** to be flown from the backstay of HDA fleets.

#### 3.3 ODCA Classes

|                     | <u>Flag</u> |
|---------------------|-------------|
| ALERION EXPLRESS 28 | A (ALPHA)   |
| EXPRESS 37          | C (CHARLIE) |
| ISLANDER 36         | E (ECHO)    |
| SANTANA 22          | W (WHISKEY) |

- 3.4 Class flags **are not required** to be flown from the backstay for ODCA fleets.

### 4.0 STARTING AND FINISH LINES

- 4.1 The Start/Finish line (S/F) will be a line between a yellow or orange flag or orange panel on the RC boat, or a panel on the club house race deck, and the Start/Finish mark specified in the course descriptions. The RC boat may set a limiting mark (which shall be considered part of the RC boat) close to her and on the same end of the starting line to protect her. There **may** be a separate Finish line, which will be on the opposite side of the RC boat from the Starting line. It will be delimited by an orange flag on the RC boat and an orange ball or inflatable mark.
- 4.2 The Finish Line (F) will be located within 0.3nm east of Treasure Island north of the Bay Bridge, and shall be a line from an orange flag, panel or inflatable mark on the shore of Treasure Island to an inflatable mark in the waters within 0.3nm east of Treasure Island.
- 4.3 Refer to **Attachment 1** to determine specific Start & Finish line locations.

### 5.0 COURSES

- 5.1 The courses and marks are described on **Attachment 1**.
- 5.2 The courses to be sailed will be displayed by the Race Committee (RC) with numeric International Code Flags.

### 6.0 THE START

- 6.1 See **Attachment 1** for Scheduled start time and order.
- 6.2 Races will be started using RRS 26 as modified. Times will be taken from the visual signals; the absence of a sound signal shall be disregarded.

| Signal Flag(s)         | Sound         | Minutes before Start | Course Signal       |
|------------------------|---------------|----------------------|---------------------|
| WARNING Class or Group | 1 gun or horn | 5                    | Raise Course Signal |
| PREPARATORY P, I, or Z | 1 gun or horn | 4                    |                     |
| Drop PREP              | 1 horn        | 1                    | Drop Course Signal  |
| START                  | 1 gun or horn | 0                    |                     |

Warning signal for each succeeding class shall be made with or after the starting signal for the preceding class. NOTE: PREP Signal 'Black Flag' will not be used for YRA races. Boats shall not start later than 10 minutes after their signaled start.

- 7.0 **TIME LIMIT:** a time limit of five (5) hours is set for each class after their start.

## **8.0 COMMUNICATIONS**

- 8.1 **The Race Committee will attempt to hail boats for OCS and other pertinent information on VHF Channel 72.** The inability of a competitor to hear a hail for OCS or any other information shall not relieve her of her responsibility, nor shall it be grounds for redress. This changes RRS 25 and 63.1. Check in is not required. Boats are also encouraged to monitor VHF Channel 14 for updates on large vessel traffic.
- 8.2 Racers not finishing the race or not finishing the race within the time limit are required to contact the RC Committee and inform them they are dropping out or will not be finishing within the time limit. *The Race Committee may be unavailable for communication once the time limit expires for the last race.* Unless directly and specifically acknowledged by the RC, skippers must report the fact to the YRA answering service at 415-771-9500. If not able to report while underway, telephone contact must be made immediately after coming ashore.

## **9.0 RECALLS**

- 9.1 **INDIVIDUAL RECALL.** In addition to provisions of RRS 29.1, the RC may hail OCS boats by VHF radio on the designated channel. Failure of a hail, failure of a boat hearing the hail, or the order of hails shall not be grounds for redress.
- 9.2 **GENERAL RECALL.** In addition to provisions of RRS 29.2, add: If there is a second General Recall, that group will start after the last scheduled group of starters in first starting sequence on a course determined by the race committee.

## **10.0 RESTRICTED AREAS**

- 10.1 For safety reasons, lines between the following objects and the closest points ashore from them are restricted: Anita Rock and any buoy marking same, vertical 'H' beam off Water Quality Control Plant west of StFYC, bell buoy 7 off the west end of Alcatraz, and Point Blunt buoy off Angel Island. . Above obstructions are not marks of the course. The South Tower of the Golden Gate Bridge must be left to the South at all times. Any rocks visible at Mean Lower Low water immediately adjacent to Contra Costa County, Marin County or San Francisco shorelines shall be left to shoreward, except for Mile Rock, The Brothers and Red Rock.
- 10.2 The above-mentioned areas and buoys are defined as obstructions. A boat that breaks this rule may not correct her error per RRS 28.1 and shall retire.
- 10.3 Boats whose preparatory signal has not been made shall keep clear of any boat whose preparatory signal has been made. Boats shall not cross the Start or Finish line except when preparing to start, starting or finishing. Boats observed by the race committee to be in violation of this instruction may be scored DNF without a hearing. This changes RRS 63.1. On courses signaled as twice around, boats shall NOT sail through start/finish line to start second rounding.

## **11.0 INTERFERENCE WITH OTHER VESSELS**

- 11.1 Rule 9 of the Inland Rules of the Road applies. Boats shall not impede the passage of a vessel which can safely navigate only within a narrow channel or fairway (see US Dept. of Commerce chart 18649 for designated shipping channels and fairways) A violation of Rule 9 is subject to protest by any competitor or the RC, and is not exonerated by an alternate penalty. RRS 60.3 is changed to add: "(d) call a hearing for an alleged breach of Rule 9 if notified by government, commercial or individual vessel of possible infraction. It shall also extend the time limit under RRS 61.3 to accept the information." A DSQ for violation of Rule 9 shall be considered a DNE.

## **12.0 SCORING**

- 12.1 Scores will be assigned according to the NOR.

## **13.0 PROTESTS**

- 13.1 Protests under RRS 61.1 shall be submitted in writing in accordance with RRS 61.2 and mailed, emailed or faxed to the YRA of San Francisco Bay, no later than midnight the Monday following the regatta, or if Monday is a holiday, on Tuesday. Once a Protest is received by the YRA, The YRA shall contact the sponsoring Yacht Club and a protest committee shall be formed. Copies of the protest, as well as notification of the time & date of the protest will be sent to the involved parties. Note: RRS 63.8 allows protests between boats in different races.

# Attachment 1, Amended 6/14/11

## YRA Spring 2, The Summer Sailstice – June 18, 2011

### Attachment 1

#### SCHEDULED START TIME AND ORDER:

| Fleet              | Flag | Race No. | Time | PHRF        |
|--------------------|------|----------|------|-------------|
| <i>Warning</i>     |      |          | 1155 |             |
| Multihulls         | M    | 1        |      | Multihulls  |
| HDA F*             | F    | 1        |      | Sportboats  |
| HDA G*             | G    | 1        |      | 123 & Under |
| HDA D (SF 30's)*   | D    | 1        |      | SF 30's     |
| HDA K *            | K    | 1        |      | 126 & Over  |
| Express 37         | C    | 1        |      | 72          |
| Islander 36        | E    | 1        |      | 144         |
| Alerion Express 28 | A    | 1        |      | 168         |
| Santana 22         | W    | 1        |      | 234         |

\*The HDA fleets are competing for the **OCSC Summer Sailstice Perpetual Trophy**, awarded to the PHRF mono-hull with the best corrected time overall. All HDA fleets must sail the same course.

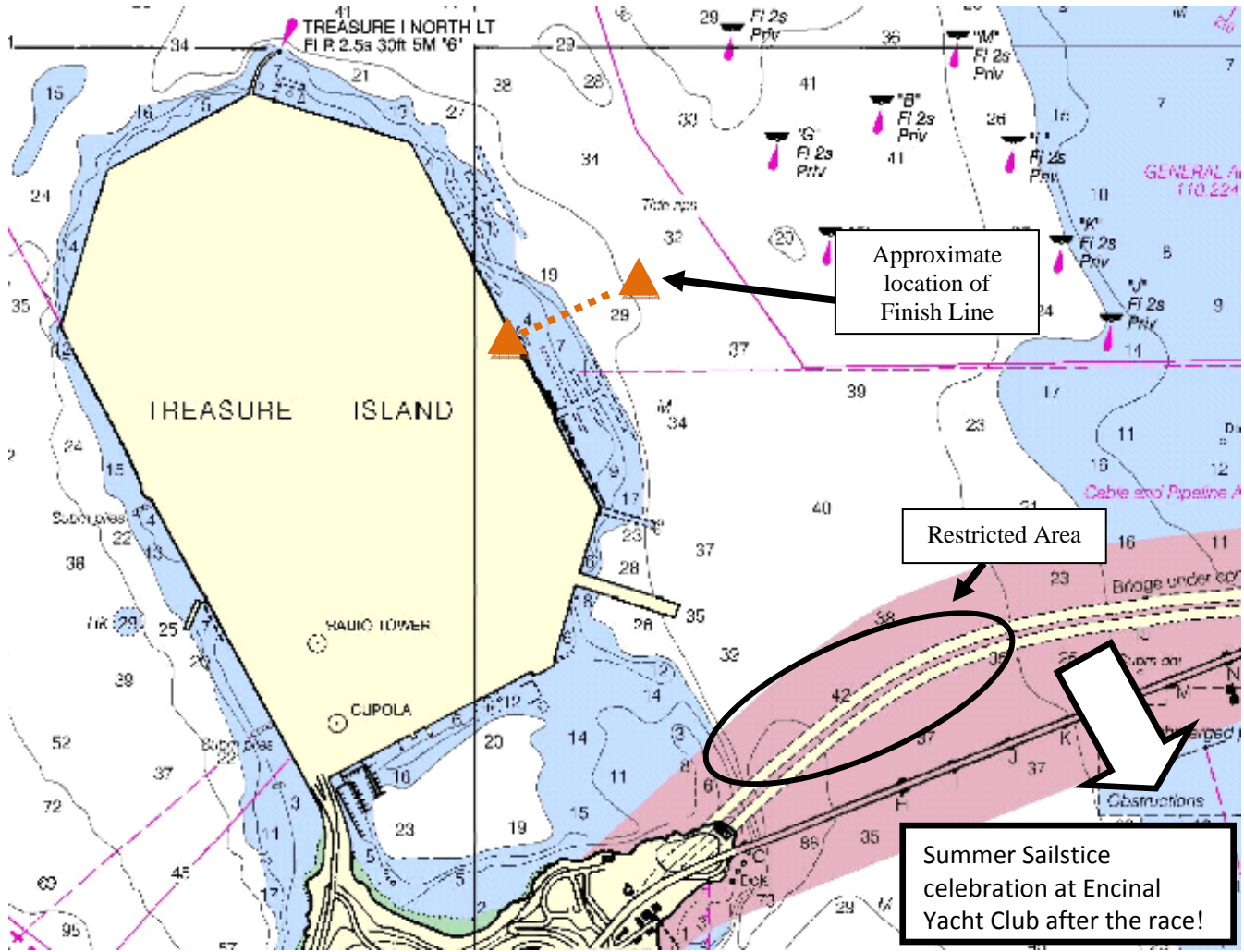
#### COURSES: ALL MARKS ROUNDED TO PORT unless otherwise indicated.

| Course | Start | Mark | Mark | Mark | Mark | Finish | Dist |
|--------|-------|------|------|------|------|--------|------|
| 1*     | EOC   | 24   |      |      |      | TI     | 4.1  |
| 3      | EOC   | 7    |      |      |      | TI     | 3.5  |
| 4*     | EOC   | 23   |      |      |      | TI     | 5.2  |
| 5      | EOC   | 21   |      |      |      | TI     | 5.6  |
| 7      | EOC   | 2    |      |      |      | TI     | 6.5  |
| 8      | EOC   | 17   | 7    |      |      | TI     | 8.7  |
| 9      | EOC   | 17   | FOC  | 8    |      | TI     | 12.1 |
| 11     | EOC   | 17   | 8    | 17   |      | TI     | 14.3 |
| 12     | EOC   | 17   | 21   | 8    | 17   | TI     | 15.3 |
| 13     | EOC   | 17   | 21   | 24   | 17   | TI     | 16.4 |
| 14     | EOC   | 17   | 21   | FOC  | 17   | TI     | 18.6 |

\*Courses 1 & 4 may be used by ODCA fleets in the case of a North Wind.

#### DESCRIPTION OF MARKS:

- 2** Alcatraz Island
- 7** R "2" FI 6s nm Northwest of Treasure Island
- 8** R "4" FI 4s Horn 1 nm East of Point Blunt
- 15** Temp YC Buoy Approx. 0.5 nm East of Yellow Bluff (Sausalito vicinity)
- 17** RG "HR" FI (2+1) R6s Harding Rock
- 21** G "1" FI G6s Approx. 0.65 nm NE of Alcatraz
- 23** RW "A" Mo (A) East of Angel Island
- 24** R "6" FI R 4s Bell, 1.1 nm East of Quarry Pt
- D** R "3" FI G 4s 15 Ft on Olympic Circle
- EOC** Olympic Circle Buoy "E"
- FOC** Olympic Circle Buoy "F"
- TI** Temp YC Buoy Approx 0.2nm east of Treasure Island, south of TIN, and north of the Bay Bridge as shown on the following chartlet



Chartlet  
For Information Only, Not Suitable for Navigation